



U.O. NO. 236.../Housing (RE)  
KMDA. Dt. 22/11/24

SUB: CARPET AREA OF FLAT (A,B, C) FOR G+XII STORIED RESIDENTIAL BUILDING AT 44/A JAINUDDIN MISTRY LANE PREMISES NO 2 GABINDA AUDDY ROAD, CHETLA, KOLKATA-700027

The undersigned has prepared drawings showing the carpet area (including common lobby & service area at ground floor and excluding balcony area) of typical floors for the above-mentioned project.

The same is being submitted in 1 no. A4 sheet for your kind perusal.

*[Signature]* 22/11/24.

Associate Planner  
Architecture & Urban Design Circle  
Project Planning Unit, KMDA

Addl. Director/  
PPU/KMDA.



Proposed carpet area is being submitted and forwarded for your kind perusal please.

*[Signature]* 22/11/24  
Addl. Director/PPU/KMDA.

Director/PPU/  
KMDA.

CE/Housing Sector/  
KMDA.

Notes above.

As discussed, it may be forwarded to CE/Housing Sector for further necessary action.

*[Signature]*  
22/11/2024

U.O.No. 380.../KMDA/DIR/PPU/E-30  
Dated... 22/11/24.



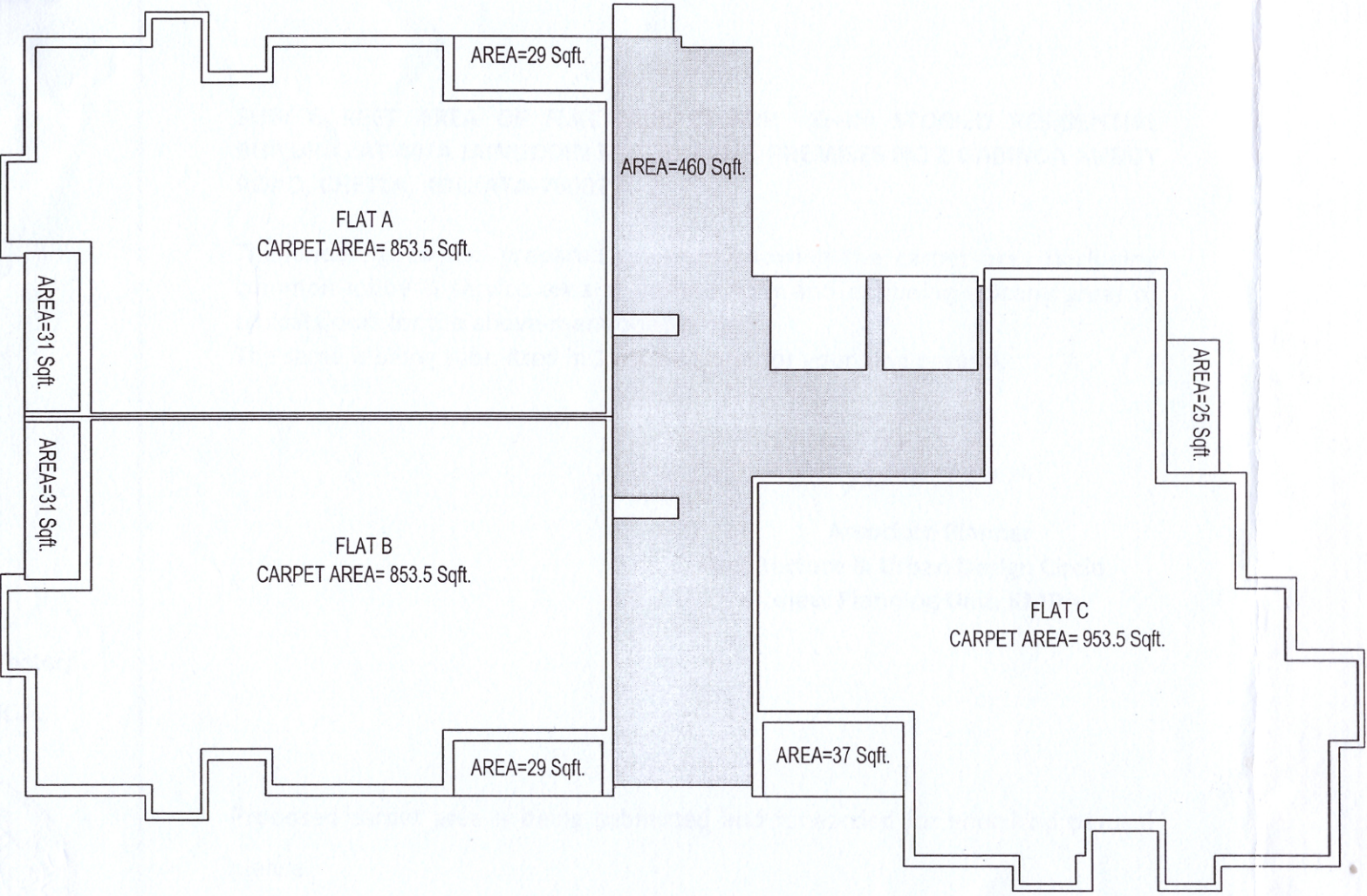
Notes above may kindly be seen.

The carpet area as per the attached drawing from PPU/KMDA may be noted for further necessary action p).

*[Signature]* 22/11/24

SE/C-VI/HS





DRAWING TYPE :	ARCHITECTURAL AREA DRAWING	
DRAWING PURPOSE :	AREA CALCULATION	
PROJECT :		
PROPOSED G+XII STORED RESIDENTIAL BUILDING AT 44/A JAINUDDIN MISTRY LANE, AT PREMISES NO 2 GABINDA AUDDY ROAD, CHETLA, KOLKATA-700027		
ASSOCIATE PLANNER		
22.11.24.		
ADDITIONAL DIRECTOR		
22/11/24		
DIRECTOR		
22/11/2024		
REVISION	DIRECTION	DRAWING
		9
DATE	NOV / 2024	
DRG NO.	A&UDC / PPU / ARCH / WD / A9	



**Memo No. – 848/HS/KMDA**

**Dated:-25.11.2024**

**The District Registrar,  
Alipore, 24 Pgs (South)**

**Sub:- Carpet area of the proposal G+12 storied residential building at Pre. No. 2, Gobinda Auddy Road & 44/A Jainuddin Mistry Lane Chetla, Kolkata - 700027.**

Sir,

The carpet area of the flats of the above mentioned premises will be changed. Please consider the revised area as mentioned in the attached sheet for calculating the IGR value.

Thanking You.

*S. Prasad*  
25/11/24  
**Executive Engineer  
Divn.- I(KIT Wings)  
Housing Sector, KMDA**

**Copy To:**

1. CE, H.S., KMDA
- ✓ 2. SE (Cir.-VI), HS, KMDA

**EXECUTIVE ENGINEER  
Div-1, Housing Sector  
KMDA**

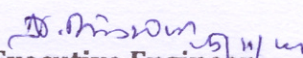




**Re.: Pre. No. 2, Gobinda Auddy Road & 44/A Jainuddin Mistry Lane Chetla, Kolkata - 700027**

**Sub.: Carpet area of the G+12 storied residential building at above mentioned premises for assistance of market value**

Floor	Flat marked	Built-up area	Carpet area
1 <sup>st</sup> Floor	Flat A	967.5 Sqft.	853.5Sqft.
	Flat B	967.5 Sqft	853.5Sqft.
	Flat C	1104.5 Sqft.	953.5 Sqft.
2 <sup>nd</sup> Floor	Flat A	967.5 Sqft.	853.5Sqft.
	Flat B	967.5 Sqft	853.5Sqft.
	Flat C	1104.5 Sqft.	953.5 Sqft.
3 <sup>rd</sup> Floor	Flat A	967.5 Sqft.	853.5Sqft.
	Flat B	967.5 Sqft	853.5Sqft.
	Flat C	1104.5 Sqft.	953.5 Sqft.
4 <sup>th</sup> Floor	Flat A	967.5 Sqft.	853.5Sqft.
	Flat B	967.5 Sqft	853.5Sqft.
	Flat C	1104.5 Sqft.	953.5 Sqft.
5 <sup>th</sup> Floor	Flat A	967.5 Sqft.	853.5Sqft.
	Flat B	967.5 Sqft	853.5Sqft.
	Flat C	1104.5 Sqft.	953.5 Sqft.
6 <sup>th</sup> Floor	Flat A	967.5 Sqft.	853.5Sqft.
	Flat B	967.5 Sqft	853.5Sqft.
	Flat C	1104.5 Sqft.	953.5 Sqft.
7 <sup>th</sup> Floor	Flat A	967.5 Sqft.	853.5Sqft.
	Flat B	967.5 Sqft	853.5Sqft.
	Flat C	1104.5 Sqft.	953.5 Sqft.
8 <sup>th</sup> Floor	Flat A	967.5 Sqft.	853.5Sqft.
	Flat B	967.5 Sqft	853.5Sqft.
	Flat C	1104.5 Sqft.	953.5 Sqft.
9 <sup>th</sup> Floor	Flat A	967.5 Sqft.	853.5Sqft.
	Flat B	967.5 Sqft	853.5Sqft.
	Flat C	1104.5 Sqft.	953.5 Sqft.
10 <sup>th</sup> Floor	Flat A	967.5 Sqft.	853.5Sqft.
	Flat B	967.5 Sqft	853.5Sqft.
	Flat C	1104.5 Sqft.	953.5 Sqft.
11 <sup>th</sup> Floor	Flat A	967.5 Sqft.	853.5Sqft.
	Flat B	967.5 Sqft	853.5Sqft.
	Flat C	1104.5 Sqft.	953.5 Sqft.
12 <sup>th</sup> Floor	Flat A	967.5 Sqft.	853.5Sqft.
	Flat B	967.5 Sqft	853.5Sqft.
	Flat C	1104.5 Sqft.	953.5 Sqft.

  
**Executive Engineer**  
**Divn.- I(KIT Wings)**  
**Housing Sector, KMDA**